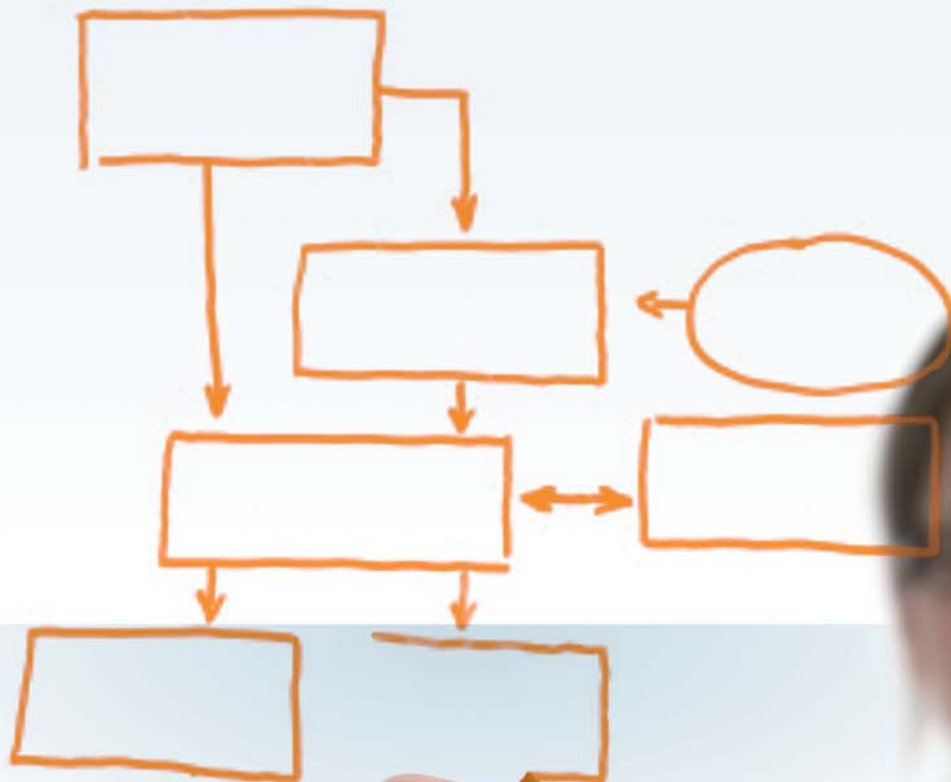


Telsis Training Services

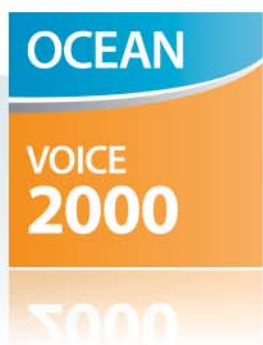
Ocean 2000 Voice Products



Telsis Voice products combine World leading flexibility and extensible modularity with a simple-to-use embedded service creation environment, enabling operators or their chosen partner to develop services rapidly – then modify them as evolving markets or customer feedback dictates. The Ocean 2000 series gives you the ability to react with creativity and agility to build cost-effective and risk-free differentiation, revenues, and customer loyalty.

Contents

Telsis Training Services	4
Ocean 2010 Service Switching Point & Ocean 2020 Intelligent Protocol Converter Management	5
Ocean 2280 IN Application Server	6
Ocean Maintenance	7
Service Creation for the Ocean 2010 Service Switching Point	8
Service Creation for the Ocean 2280 IN Application Server	9
Component Creation for the Ocean 2280 IN Application Server	10



The Telsis training programme for Ocean 2000 Voice products consists of courses designed for support staff, network staff and managers.

To optimise learning effectiveness, we ensure the class sizes remain low, with a maximum of eight delegates. Each course is designed to focus on providing delegates with a deeper understanding of our equipment when they are back in the workplace.

In-company courses

Each course may be run on site and all courses can be tailored to meet individual company needs. Dates can be discussed on application.

Advisory services

If you require assistance while deciding on your training requirements, or if you need advice and guidance on which may be the most appropriate course, then we can help. Call us on +44 1489 76 00 00 or email training@telsis.com. We have a team ready and able to help.

Registration

Bookings may be provisionally made using the above telephone number, but should be confirmed with a purchase order within five working days. You will then receive an invoice/receipt within five working days. Joining instructions will be sent no later than two weeks before the event.

Accommodation

Joining Instructions will contain a list of local hotels and amenities, if required, at delegates own cost.

Change of terms

It may be necessary for reasons beyond our control to alter the venue, content or timing of a course. Should any event be cancelled, fees will be refunded. We accept no liability for any other costs incurred.

Ocean 2010 Service Switching Point & Ocean 2020 Intelligent Protocol Converter Management



The Ocean 2010 and Ocean 2020 Management course is designed to introduce the delegate to the Ocean 2010 Service Switching Point and the Ocean 2020 Intelligent Protocol Converter.

The first part of the course focuses on Platform Manager, which is used to manage the Ocean 2010 and 2020. This is covered as separate topics, followed by exploration exercises and practical exercises.

The second part of the course covers Ocean 2010 and 2020 service management using Route. Particular emphasis is given to service diagnostics.

The course focuses on how to use the management tools together to rapidly identify, contain and solve problems.

Benefits

The skills learnt will enable the delegate to support Telsis equipment through a deeper understanding of how the Ocean 2010 and 2020 work.

Who should attend

This course is intended for network operations and maintenance staff who need to monitor, maintain and diagnose faults in the Ocean platforms or connected equipment. The course is also relevant to staff involved in deploying and maintaining network services.

Objectives

By the end of the course the delegate will be able to:

- ~ identify the components that comprise the Ocean 2010 and 2020 units
- ~ describe the components' functions within the Ocean 2010 and 2020
- ~ use Platform Manager to monitor and manage the component status
- ~ configure point codes, link sets and route sets
- ~ configure audio bearers
- ~ use Platform Manager to monitor alarms and identify problems
- ~ set up trunk groups
- ~ use Route to configure both In Rules and Out Rules, and any parameters that may be required

- ~ configure applications with virtual trunk groups
- ~ use Route to check on the status of audio files
- ~ explain the benefits and use of the database exchange application

Prerequisites

A basic understanding of the telecoms environment and a working knowledge of the Intelligent Network (IN) is essential.

Day 1
Introduction ~ Outline of course ~ Aims & Objectives Overview of Ocean 2000 Hardware & Software Introduction to the Ocean 2010 and 2020
Break
Introduction to Platform Manager
Lunch
Platform Manager Exploration Exercises
Break
Platform Manager Self-paced Exercises
Day 2
Platform Manager Self-paced Exercises
Break
Introduction to Route Inbound Rules & Outbound Rules
Lunch
Route Exploration Exercise
Break
Practical Confirmation Exercises

Ocean 2280 IN Application Server



The Ocean 2280 Management course is designed to provide the delegate with the skills and knowledge to use Platform Manager and Deploy to manage the Ocean 2280 IN Application Server from a service and network management point of view.

Benefits

The skills learnt will enable the delegate to view and analyse network problems and alarm indications on the unit.

Who should attend

This course is primarily intended for network management staff who need to resolve service problems remotely.

Objectives

By the end of the course the delegate will be able to:

- ~ discuss the position of the Ocean 2280 and its function in a typical network and service node
- ~ use Platform Manager to view and manage the Ocean 2280
- ~ view and analyse Ocean 2280 alarm conditions to solve problems quickly
- ~ use Deploy to observe and maintain the version levels of the Ocean 2280 service components: maps, nodes, databases, service key and indialled number assignments.

Prerequisites

A basic understanding of the telecoms environment and a working knowledge of the Intelligent Network (IN) is essential.

One Day Course

Introduction

~ Outline of course

~ Aims & Objectives

Overview of Ocean 2000 Hardware & Software

Introduction to the Ocean 2280 IN Application Server

Break

Introduction to Platform Manager

Introduction to Deploy

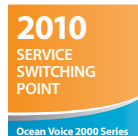
Lunch

Self-paced Exercises

Break

Discussion & Evaluation

Ocean Maintenance



This course provides an opportunity for the delegate to explore the Telsis core platforms (Ocean 2020 Intelligent Protocol Converter, Ocean 2010 Service Switching Point and 2280 IN Application Server) and their components.

The first part of the course focuses on the Ocean 2020 and 2010, its hardware, and on using Platform Manager to prepare the unit for maintenance. This is followed by a practical analysis and practical tasks. Particular attention is paid to system diagnostics and common maintenance issues.

The second part of the course covers the Ocean 2280 covering analysis and practical tasks using Platform Manager. Emphasis is given to service diagnostics. The course focuses on how to maintain the equipment using the software platforms and tools to rapidly identify, contain and resolve problems.

Benefits

The skills learnt will provide the delegate with a better understanding of each Telsis platform and the implications of carrying out work without following procedures. The course also provides vital experience in maintenance issues without having to gain this experience on a busy revenue-generating network.

Who should attend

This course is primarily intended for those who will be performing first-line maintenance on the Ocean 2020, 2010 and 2280.

Objectives

By the end of the course the delegate will be able to:

- ~ use the management applications to prepare the units for maintenance
- ~ diagnose problems either by analysing the alarms within the management application or by investigating the front panels
- ~ carry out maintenance safely on Ocean equipment
- ~ communicate more effectively and with a deeper understanding of Ocean equipment

Prerequisites

None

One Day Course

Introduction to Ocean Maintenance

Break

Ocean Maintenance Removal & Replacement Procedures

Lunch

Practical Maintenance Removal & Replacement Exercises

Break

Practical Maintenance Exercises
End of course discussion & Evaluation

Service Creation for the Ocean 2010 Service Switching Point



This course describes the use of Route and NODAL for the Ocean 2010 switch. It looks in detail at creating applications for the Ocean 2010 platform (using SSP NODAL) and then installing and configuring those applications on a unit using Route.

Benefits

The skills learnt will enable the delegate to create custom applications on the Ocean 2010, manipulating calls to suit individual service needs.

Who should attend

This course is primarily intended for those who will be creating applications to run on the 2010. The majority of the course focuses on Ocean 2010 NODAL, a 'C'-like programming language used to create user-defined applications for the Ocean 2010.

Objectives

By the end of the course the delegate will be able to:

- ~ discuss the concepts of a state machine
- ~ explain what internal events or external messages trigger the 2010 application event handlers
- ~ select the correct sequence of Ocean 2010 library functions to play audio and to perform DTMF detections and outdials to third parties
- ~ describe the meaning and the purpose of the different sections in a Ocean 2010 NODAL application
- ~ write simple applications to play audio and to perform DTMF detection and outdials to third parties
- ~ explain the concepts and function of inter-task communication and management tasks
- ~ write a complex application to interact with an external database using a management task, communicating over TCP/IP

Prerequisites

Before attending this course, delegates must have attended the Ocean Management course, or have a practical working knowledge of Platform Manager and Route.

One Day Course

Introduction to Ocean 2010 SSP NODAL
Break
Ocean 2010 SSP NODAL Practical Exploration Exercises
Lunch
Ocean 2010 SSP NODAL Practical Exploration Exercises
Break
Discussion and Evaluation

Service Creation for the Ocean 2280 IN Application Server



This course covers the use of Map Studio and Data Studio to create and provision Ocean 2280-based services. It also examines the role of Deploy and the Provisioning Gateway in service development and deployment.

Benefits

The skills learnt will enable the delegate to create, modify and maintain customised services running on the Ocean platform.

Who should attend

This course is intended for service designers in Ocean 2280-based environments who have little or no prior experience of Ocean service design. The majority of the course is also suitable for staff who need to assemble services from standard components but who have no programming experience, such as technical sales support staff.

Objectives

By the end of the course the delegate will be able to:

- ~ explain how an Ocean 2280 handles calls
- ~ discuss the concepts of maps, nodes and databases in service design
- ~ demonstrate the use of Map Studio to create maps and configure nodes to play audio, perform DTMF detection and outdial to a third party
- ~ compile and test maps deployed to the service node
- ~ use Data Studio to create and deploy a Ocean 2280 database
- ~ design, create and test a map service that uses a Ocean 2280 database lookup to access call-handling information
- ~ use Deploy to update versions of maps, databases and nodes
- ~ set up automated tasks to regularly update a Ocean 2280 database using Data Studio and Deploy
- ~ create and test a management map to interact with an external database

Prerequisites

None

One Day Course

Introduction to the Ocean Service Creation Environment – Map Studio

Break

Map Creation Practical Exploration Exercises

Lunch

Introduction to Ocean Service Creation Environment – Data Studio

Break

Data Studio Practical Exploration Exercises
Discussion & Evaluation

Component Creation for the Ocean 2280 IN Application Server



This course covers the use of NODAL to create reusable components (node types) for the Ocean 2280 IN Application Server.

Benefits

The skills learnt will enable the delegate to create, modify and maintain special nodes for use in customised services developed with Map Studio.

Who should attend

This course is intended for service designers in Ocean 2280-based environments who have some programming experience (ideally in 'C') and are familiar with the Ocean service design environment.

Objectives

By the end of the course the delegate will be able to:

- ~ review Map Studio, the Ocean 2280 and how calls are handled
- ~ introduce the NODAL language on the Ocean 2280
- ~ explain the code structure inside a node
- ~ investigate how branches and parameters are coded in the node
- ~ explain the different node entry points and handlers
- ~ write a simple node type to experience the code structure, compiling and error checking
- ~ load a node onto the Ocean 2280 using Deploy, create a map using the node and verify its operation
- ~ list the Ocean 2280 library functions and their actions
- ~ create nodes that play audio, perform DTMF detection, look up data in a database and outdial to a third party
- ~ explain the concepts and functions of inter-task communications and management maps
- ~ write a set of nodes that interact with an external database using a management task, communicating over TCP/IP

Prerequisites

Before attending this course, delegates must have attended the Service Creation for the Ocean 2280 course or have a practical working knowledge of service design using Map Studio.

One Day Course

Map Studio Overview
Ocean 2280 NODAL API Calls

Break

Ocean 2280 NODAL Exploration

Lunch

Ocean 2280 NODAL Exploration

Break

Self-guided Play, Prompt and Collect;
Deliver to Practical

Telsis develops, manufactures and supports high-performance carrier-grade voice, video and messaging solutions that let Tier 1 wireline and mobile operators, OLOs and MVNOs unlock opportunities to grow revenue, raise customer loyalty and cut capex.

Founded in 1987, Telsis has offices in the UK, Australia, Dubai, Germany, Italy, Spain and Singapore.

Directions to Telsis



By Road

- 1) M27 – Junction 9 – Exit to Fareham West.
- 2) Dual carriageway to roundabout, take first exit to Segensworth East.
- 3) 100 metres to roundabout, take second exit into Barnes Wallis Road.
- 4) Telsis is approximately 200 metres on right.
- 5) Customer parking and entrance is located at the front of the building.

By Rail/Air

Taxis are available from Southampton Airport (Parkway) Railway Station and Southampton Airport, approximately 10 miles from Telsis

Contact: training@telsis.com

www.telsis.com

UK	Germany	España	Italia	Middle East	Singapore	Australia
T: +44 (0) 1489 76 00 00	T: +49 (0) 6151 827 850	T: +34 91 532 72 10	T: +39 02 655 1644	T: +971 4 361 6179	T: +65 6224 5585	T: +61 (0) 2 9978 5300
F: +44 (0) 1489 76 00 76	F: +49 (0) 6151 827 8521	F: +34 91 532 96 40	F: +39 02 657 5302	F: +971 4 439 3554	F: +65 6224 7356	F: +61 (0) 2 9978 5333